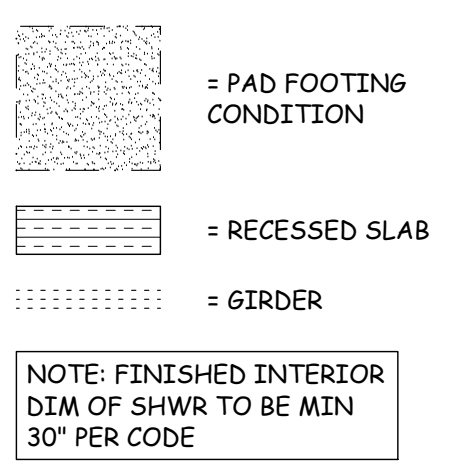


**DRAWING INDEX**

A1	FOUNDATION PLAN
A2	FLOOR PLAN
A3	ELEVATIONS
A4	ROOF PLAN
E1	ELECTRICAL PLAN
ST	SITE PLAN
S1	STRUCTURAL DETAILS
S2	STRUCTURAL DETAILS



**CODE COMPLIANCE VERIFICATION**

BUILDING CODE: FLORIDA BUILDING CODE, RESIDENTIAL 2020 (7th EDITION) FLORIDA BUILDING CODE  
 MECHANICAL CODE: FLORIDA BUILDING CODE, MECHANICAL 2020 (7th EDITION)  
 PLUMBING CODE: FLORIDA BUILDING CODE, PLUMBING 2020 (7th EDITION)  
 ELECTRICAL CODE: NEC 2017  
 FIRE CODE: FLORIDA FIRE PREVENTION CODE 2020 (7th EDITION)  
 ACCESSIBILITY: FLORIDA BUILDING CODE, BUILDING 2020 (7th EDITION)  
 ENERGY CODE: FLORIDA BUILDING CODE, BUILDING 2020 (7th EDITION)

**WIND DESIGN**

BASIC WIND SPEED: 160 MPH (3 SECOND GUST)  
 IMPORTANCE FACTOR: 1.0  
 EXPOSURE: B  
 METHOD OF DESIGN: ASCE7-16  
 MEAN ROOF HEIGHT: 14'-5 1/2"  
 INTERNAL PRESSURE COEFFICIENT: 0.18 ENCLOSED MAIN BUILDING 0.55 LANAI AND ENTRY

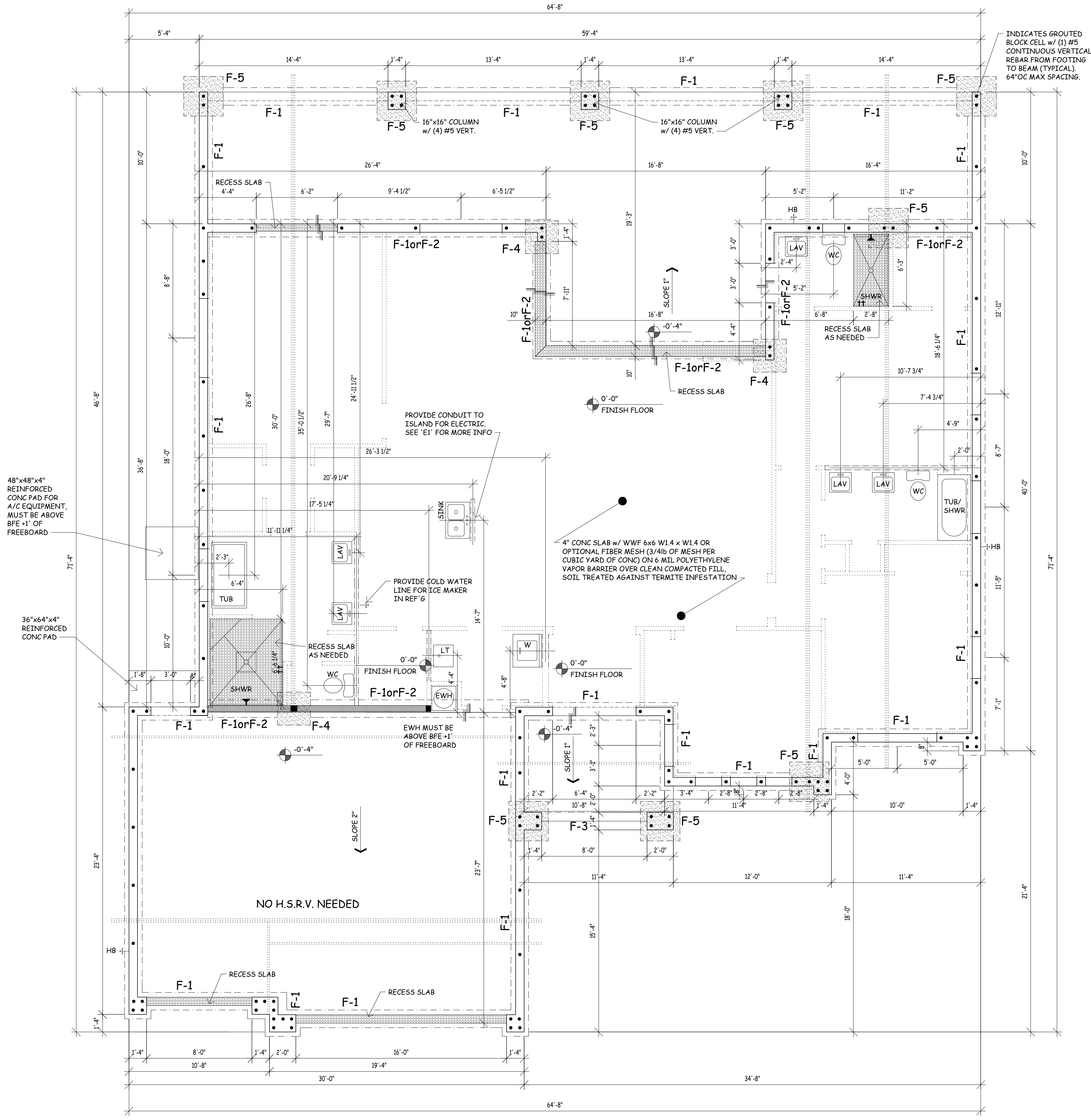
**BUILDING DESIGN**

RISK CATEGORY (2)

**FOOTING SCHEDULE**

LOCATE	SIZE	TYPE	REINFORCEMENT	COMMENTS
F-1	16"W x 10"D	STEM WALL	(2) #5 CONTINUOUS	TYP FOOTING
F-2	16"W x 12"D	INTEGRAL	(2) #5 CONTINUOUS	-
F-3	8"W x 8"D	EDGE	(1) #5 CONTINUOUS	-
F-4	30"x30"x12"D	PAD	(4) #5 EACH WAY	-
F-5	36"x36"x12"D	PAD	(4) #5 EACH WAY	-

#"W = FOOTING WIDTH  
#"D = FOOTING DEPTH



Seal With Engineer's Signature Certifies That The Structural Components of This Plan are in Compliance To The 2020 Florida Building Code, Mechanical, Electrical, Fire, and Energy Code, and Florida Building Code, Building 2020 (7th Edition) Wind Pressure is in Compliance To Section 1609.

Brian Loy Chandler - P.E. #72152 - Cert of Auth #9910

**GulfCoast Engineering, LLC**  
 3002 Del Prado Blvd S, Suite B  
 Cape Coral, FL 33904  
 Ph: 239-488-6633 - Fax: 239-488-6733

**Jason's Drafting Services, Inc.**  
 Admin@jds-inc.net  
 239.673.7024  
 2804 Del Prado Blvd S, #105 Cape Coral, FL 33904

Starr Quality Construction  
**Custom Home**  
 633 SW 13th ST - Cape Coral, FL 33991

SCALE OF DRAWING

IF BOX IS 1" SQ THEN ITS: 1/4"-1'-0"  
 IF BOX IS 1/2" SQ THEN ITS: 1/8"-1'-0"

8.31.2021

**A1**  
21-6292

### WINDOW SCHEDULE

LOCATE	SIZE	MANUFACTURER	NOA # / FL #	HURR. PROTECT	NOTES
A	72"x24"	P&T	FL243.8	IMPACT	FIXED GLASS
B	24"x72"	P&T	FL243.8	IMPACT	FIXED GLASS
C	25"	P&T	FL239.4	IMPACT	SINGLE HUNG
D	4020	P&T	FL242.9	IMPACT	HORIZONTAL ROLLER
E	14"	P&T	FL239.4	IMPACT	SINGLE HUNG

### DOOR SCHEDULE

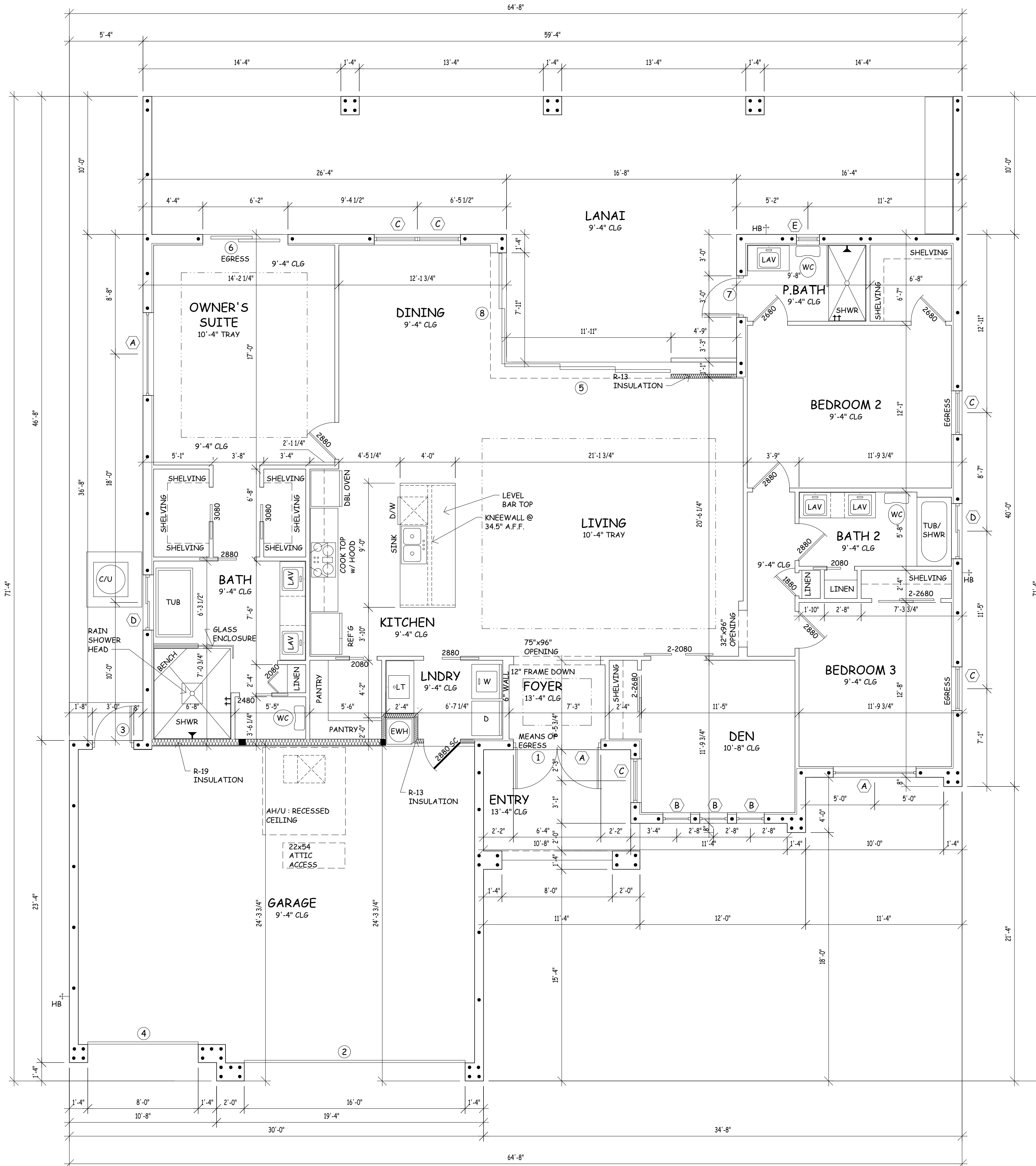
LOCATE	SIZE	MANUFACTURER	NOA # / FL #	HURR. PROTECT	NOTES
1	(2) 3080	PLASTPRO	FL17184.2	IMPACT	FULL LITE - ENTRY
2	16080	CLOPAY	FL15279.52	IMPACT	OVERHEAD
3	2880	PLASTPRO	FL17184.7	IMPACT	SOLID
4	8080	CLOPAY	FL15279.52	IMPACT	OVERHEAD
5	12080	P&T	FL251.4	IMPACT	SLIDING GLASS DOOR 90° CORNER - PKT
6	6080	P&T	FL251.4	IMPACT	SLIDING GLASS DOOR
7	2880	PLASTPRO	FL17184.2	IMPACT	FULL LITE
8	8080	P&T	FL251.4	IMPACT	SLIDING GLASS DOOR 90° CORNER - PKT

NOTE : CONTRACTOR TO VERIFY MASONRY OPENINGS PRIOR TO COMMENCEMENT OF WORK.

NOTE: AT LEAST ONE BATH TO BE AN ACCESSIBLE BATH

NOTE: FINISHED INTERIOR DIM OF SHWR TO BE MIN 30" PER CODE

AREAS	
LIVING	2144 SF
LANAI	748 SF
ENTRY	95 SF
GARAGE	697 SF
TOTAL:	3684 SF



FLOOR PLAN

Seal With Engineer's Signature Certifies That The Structural Components Of This Plan Are In Compliance To The 2020 Florida Building Code, Residential, Part 10  
Wind Pressure Is In Compliance To Section 1609.

**GulfCoast Engineering, LLC**  
3002 Del Prado Blvd S, Suite B  
Cape Coral, FL 33904  
PH: 239-488-6633 - Fax: 239-488-6733  
Brian Loy Chandler - P.E. #72152 - Cert of Auth #9910

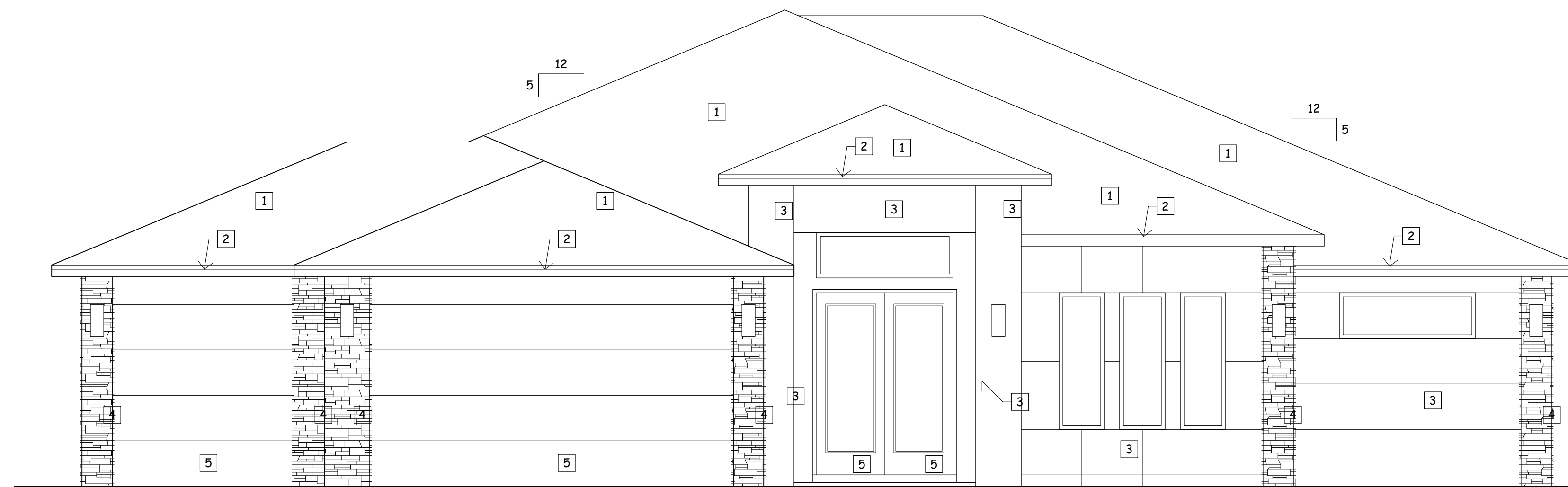
**Jason's Drafting Services, Inc.**  
Admin@jds-inc.net  
239.673.7024  
2804 Del Prado Blvd S, #105 Cape Coral, FL 33904

Starr Quality Construction  
**Custom Home**  
633 SW 13th ST - Cape Coral, FL 33991

SCALE OF DRAWING  
IF BOX IS 1" SQ THEN ITS: 1/4"=1'-0"  
IF BOX IS 1/2" SQ THEN ITS: 1/8"=1'-0"

8.31.2021

**A2**  
21-6292



FRONT ELEVATION

PEAK OF ROOF  
ELEV = 19'-6 1/2"

TOP OF WALL  
ELEV = 13'-4"

TOP OF WALL  
ELEV = 10'-8"

TOP OF WALL  
ELEV = 9'-4"

FINISH FLOOR  
ELEV = 0'-0"

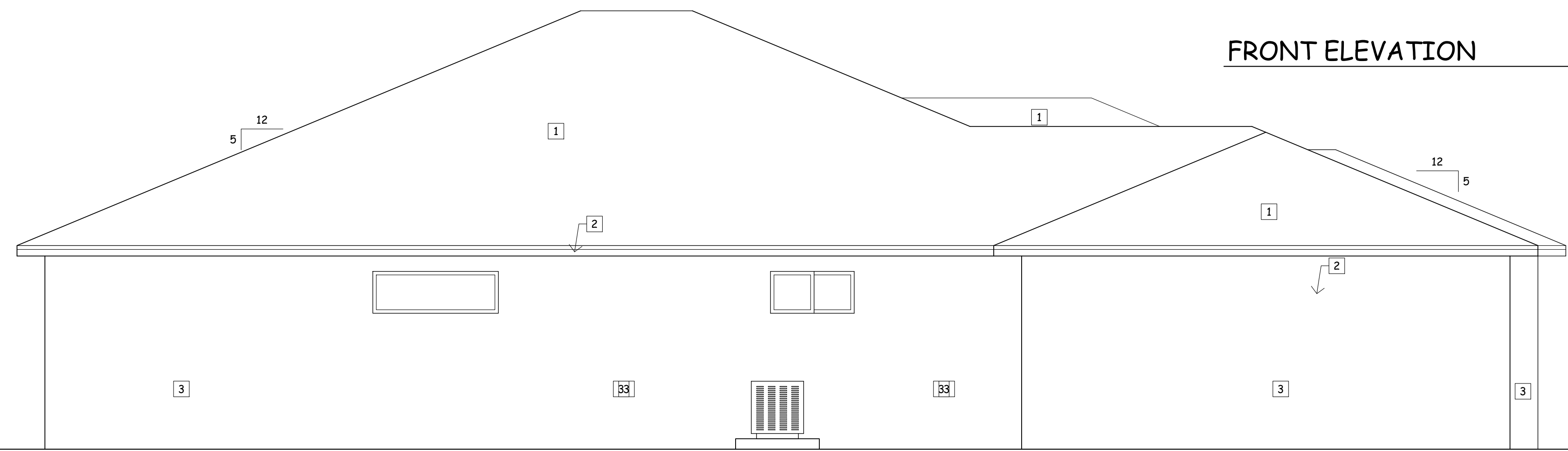
Seal With Engineer's Signature Certifies That The Structural Components of This Plan Are in Compliance To The 2020 Florida Building Code, Residential, and Florida Building Code Wind Pressure to be in Compliance To Section 1609.

Brain Loy Chandler - P.E. #72152 - Cert of Auth #9910

Jason's Drafting Services, Inc.

239.673.7024  
Admin@jds-inc.net  
2804 Del Prado Blvd S, #105 Cape Coral, FL 33904

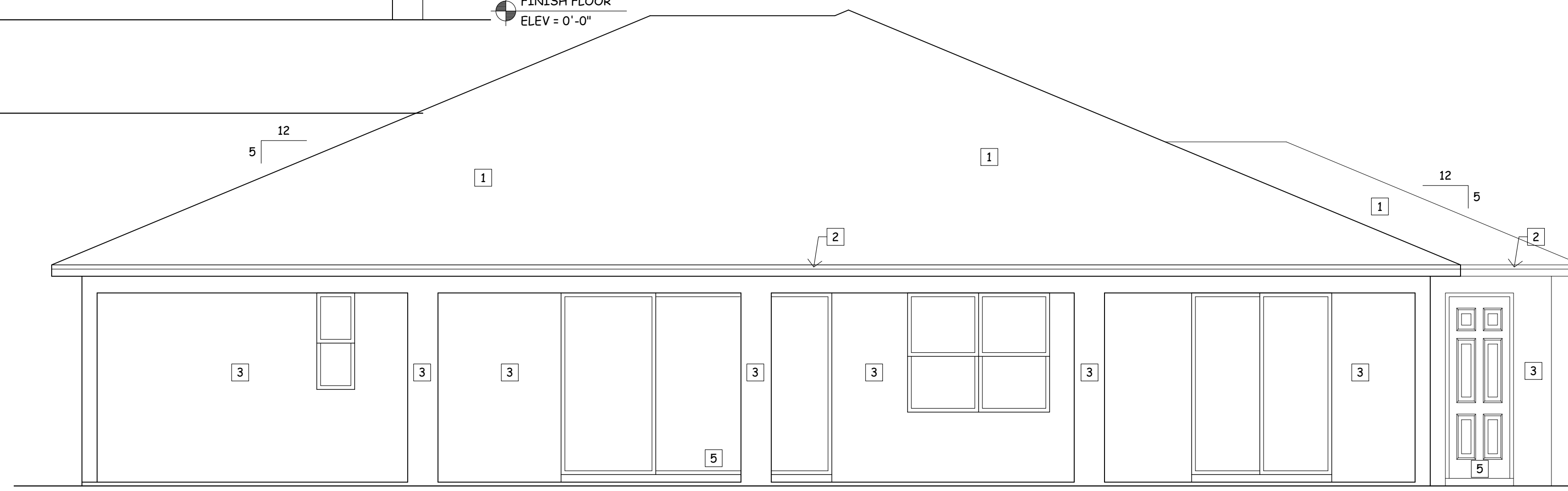
Starr Quality Construction  
**Custom Home**  
633 SW 13th ST - Cape Coral, FL 33991



LEFT ELEVATION

**EXTERIOR FINISHES**

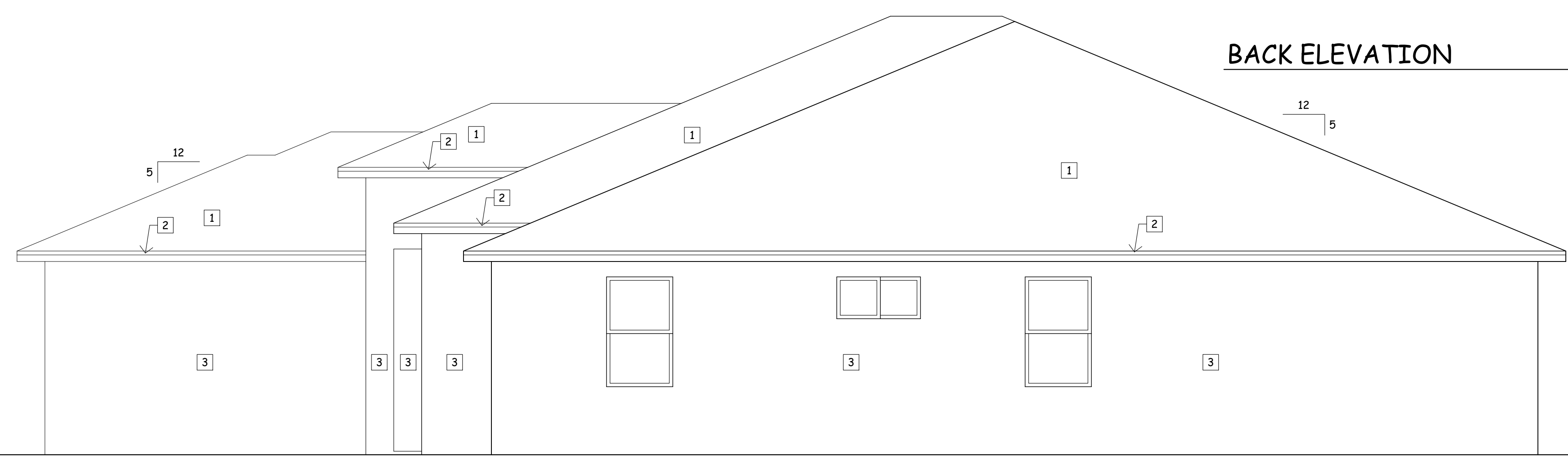
1	- SHINGLE ROOFING SYSTEM
2	- PAINTED ALUMINUM FASCIA
3	- PAINTED CEMENT SMOOTH FINISH
4	- STONE FINISH
5	- EXTERIOR DOOR



BACK ELEVATION

TOP OF WALL  
ELEV = 9'-4"

FINISH FLOOR  
ELEV = 0'-0"



RIGHT ELEVATION

TOP OF WALL  
ELEV = 9'-4"

FINISH FLOOR  
ELEV = 0'-0"

SCALE OF DRAWING

IF BOX IS 1" SQ THEN  
ITS: 1/4"=1'-0"

IF BOX IS 1/2" SQ THEN  
ITS: 1/8"=1'-0"

8.31.2021



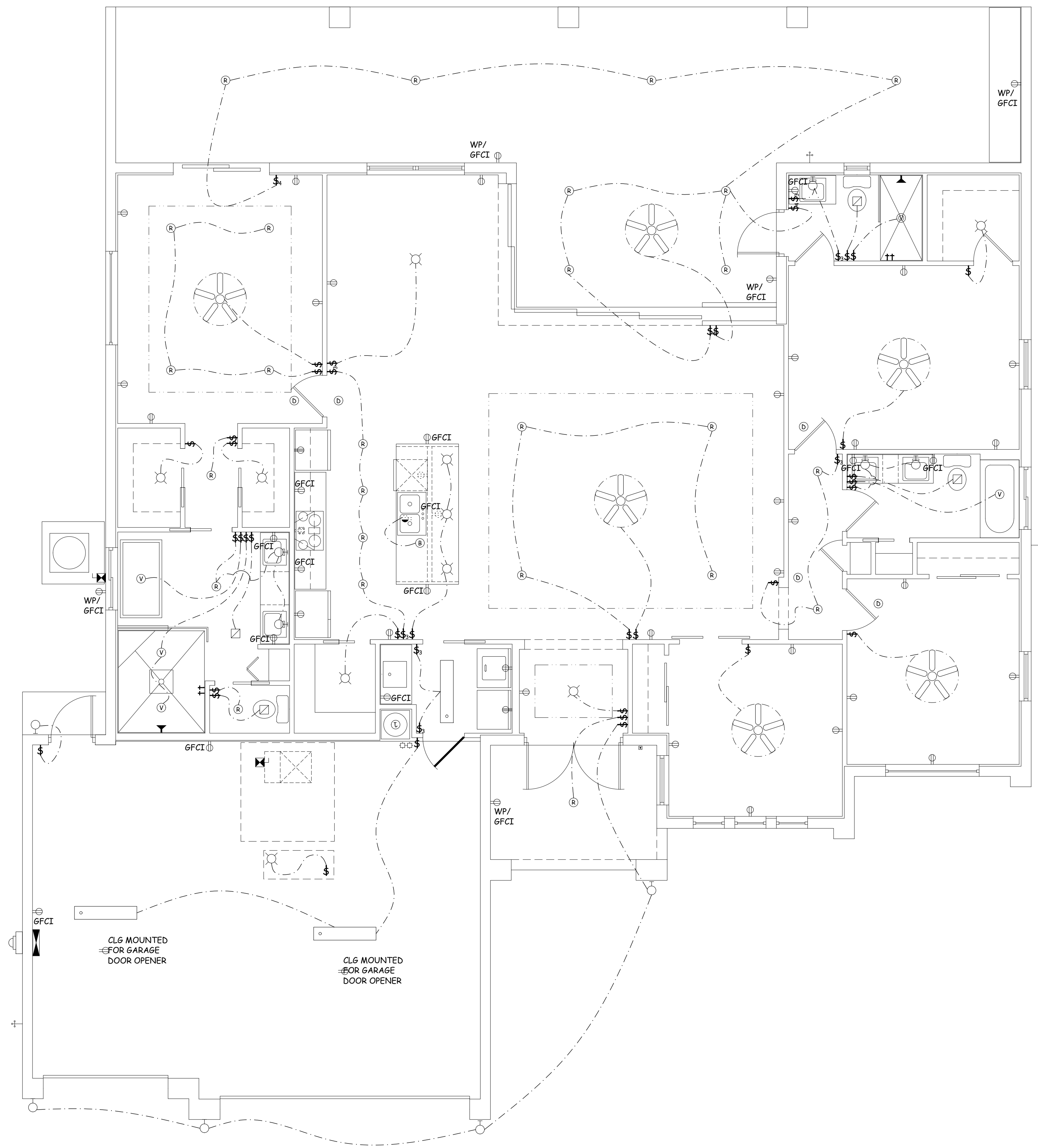


**ELECTRICAL SYMBOLS**

<p><b>DUPLEX OUTLETS</b></p> <ul style="list-style-type: none"> <li>○ STANDARD</li> <li>○ 1/2 HOT</li> <li>WP WEATHER PROOF</li> <li>○ GROUND FAULT CIRCUIT INTERRUPTER</li> <li>○ UNDER CABINET</li> <li>○ UNDER CABINET 1/2 HOT</li> <li>○ 220 VOLT OUTLET</li> <li>○ QUADRAPLEX OUTLET</li> <li>○ FLOOR OUTLET</li> <li>○ COUNTER TOP POP UP OUTLET</li> <li>⌘ SINGLE SWITCH</li> <li>⌘ THREE-WAY SWITCH</li> <li>⌘ FOUR-WAY SWITCH</li> <li>Ⓚ PUSH BUTTON SWITCH</li> <li>○ CEILING MOUNTED LIGHT FIXTURE</li> <li>○ WALL MOUNTED LIGHT FIXTURE</li> <li>○ RECESSED LIGHT FIXTURE</li> <li>○ RECESSED VAPOR PROOF LIGHT FIXTURE</li> <li>○ RECESSED EYEBALL LIGHT FIXTURE</li> <li>□ EXHAUST FAN</li> <li>□ EXHAUST FAN W/ LIGHT</li> </ul>	<ul style="list-style-type: none"> <li>Ⓚ SMOKE &amp; CARBON MONOXIDE DETECTOR, (WIRELESS) w/ MONITORED BATTERY BACKUP</li> <li>Ⓚ JUNCTION BOX</li> <li>Ⓚ PUSH BUTTON OPERATOR FOR GARAGE DOOR OPENER</li> <li>Ⓚ DISCONNECT SWITCH</li> <li>Ⓚ ELECTRIC METER</li> <li>Ⓚ ELECTRICAL PANEL</li> <li>Ⓚ DOOR BELL</li> <li>Ⓚ DOOR BELL CHIME</li> <li>Ⓚ GAS CONNECTION</li> <li>Ⓚ TELEVISION OUTLET</li> <li>Ⓚ TELEPHONE JACK</li> <li>Ⓚ FLOOD LIGHT</li> <li>Ⓚ UNDER CABINET LIGHT</li> <li>Ⓚ HOLLYWOOD LIGHTING</li> <li>Ⓚ TRACK LIGHTING</li> <li>Ⓚ FLUORESCENT LIGHT FIXTURE</li> <li>Ⓚ FLUORESCENT LIGHT FIXTURE</li> <li>Ⓚ CEILING FAN</li> </ul>
---	--

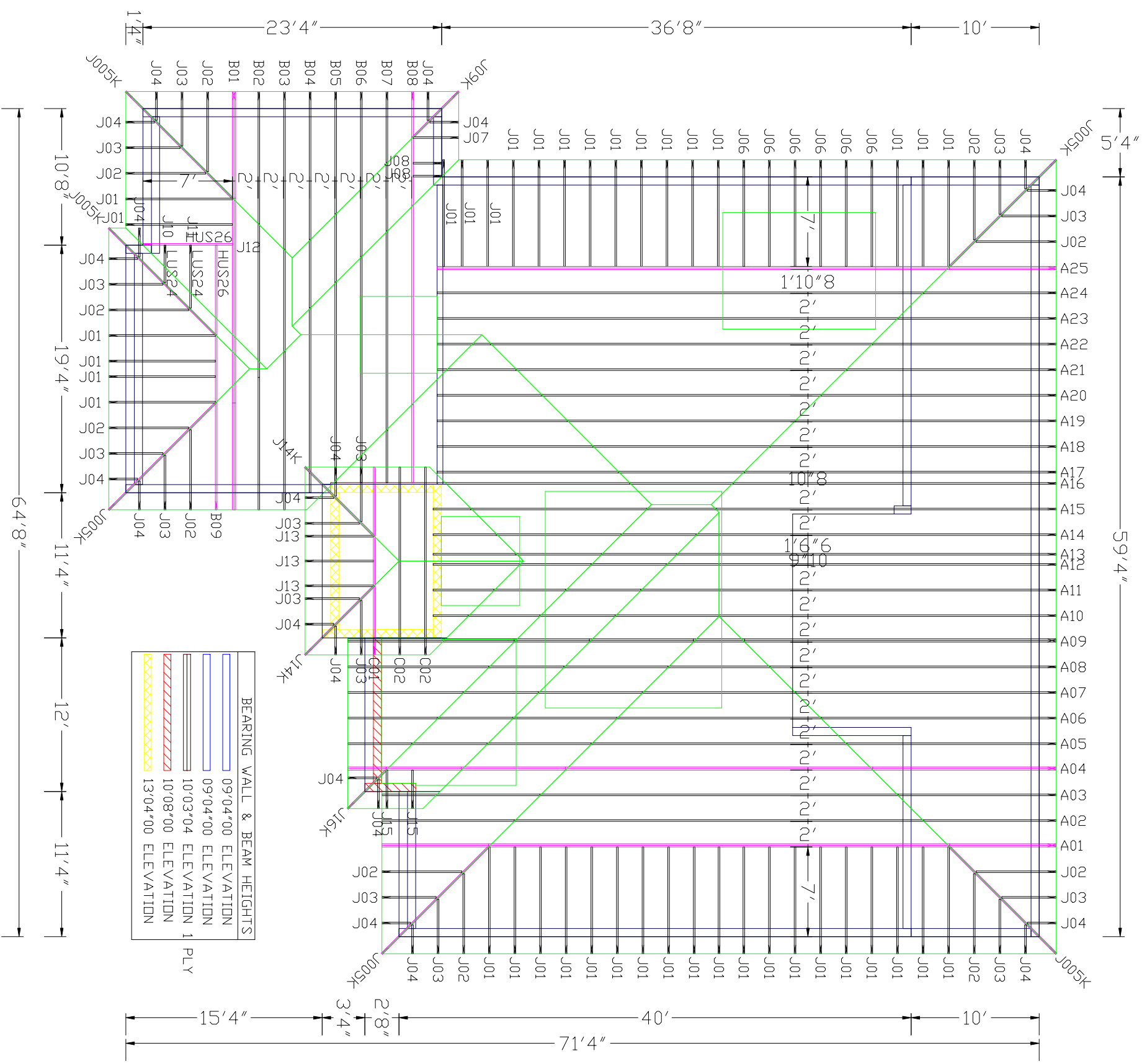
**GENERAL ELECTRICAL NOTES**

1. ALL 20 AMP RECEPTACLES OUTLETS IN KITCHEN ARE TO BE GFCI PROTECTED, NEC 210.8 (B)
2. BEDROOM OUTLETS SHALL BE PROTECTED BY AN ARC FAULT CIRCUIT INTERRUPTER (AFCI) BREAKER, NEC 210.12 (B)
3. ELECTRICAL OUTLETS AND LIGHT FIXTURES TO BE MORE THAN 10' FROM WATER'S EDGE @ POOLS, EXCEPT WHERE A POOL IS WITHIN 3.0m (10ft) OF A DWELLING AND THE DIMENSION OF THE LOT PRECLUDES MEETING THE REQUIRED CLEARANCES, NOT MORE THAN ONE RECEPTACLE OUTLET SHALL BE PERMITTED IF NOT LESS THAN 1.5m (5ft) MEASURED HORIZONTALLY FROM THE INSIDE WALL OF THE POOL, NEC 680.22 (A)(1)(4)
4. 15 AND 20 AMP, 125 AND 250 VOLT RECEPTACLES INSTALLED IN A WET LOCATION SHALL HAVE AN ENCLOSURE THAT IS WEATHERPROOF WHETHER OR NOT THE ATTACHMENT PLUG CAP IS INSERTED, NEC 406.8 (B)(1)
5. SMOKE DETECTORS ARE NOT PERMITTED WITHIN 3' OF A BATH DOOR OR AN A/C RETURN, NFPA 72 11.8.3.5 (E)



**ELECTRICAL PLAN**

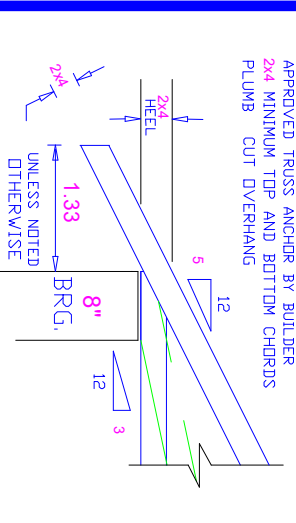
Quantity	Description	Material	Unit	Quantity	Description	Material	Unit	Quantity	Description	Material	Unit	Quantity	Description	Material



LOADING CRITERIA			
	ROOF	FLOOR	
TOP CHORD LIVE LOAD	20	20	p.s.f.
TOP CHORD DEAD LOAD	10	10	p.s.f.
BOTTOM CHORD LIVE LOAD	0	0	p.s.f.
BOTTOM CHORD DEAD LOAD	10	10	p.s.f.
TOTAL LOAD	40	40	p.s.f.
DURATION FACTOR	1.25	1.00	

BUILDING CODE: FBC 7th Ed. 2020 Res.  
 WIND LOAD TYPE: MMFRS  
 WIND STANDARD: ASCE 7-16  
 WIND SPEED: 160 m.p.h.  
 WIND USAGE: Residential - CAT II  
 BUILDING TYPE: Closed  
 BUILDING EXPOSURE: B

**NOTE**  
 IT IS THE RESPONSIBILITY OF THE BUILDING DESIGNER OR ARCHITECT TO PROVIDE AN APPROPRIATE CONNECTION FOR TRUSSES TO SUPPORTING STRUCTURE PER READING SHOWN ON TRUSS FABRICATION DRAWINGS. ALL TRUSS CONNECTIONS, INCLUDING AND/OR PLUMBING (AND THEIR CONNECTIONS), IN TRUSS SPACE MUST BE DIMENSIONED BY BUILDER ON APPROVED TRUSS LAYOUT PRIOR TO FABRICATION.  
 THIS COMPANY IS A TRUSS MANUFACTURER WHOSE RESPONSIBILITIES ARE LIMITED TO THOSE DESCRIBED IN WTC 1-1995 "DESIGN RESPONSIBILITIES". ACCORDINGLY, IT DISCLAIMS ANY RESPONSIBILITIES AND/OR LIABILITY FOR THE CONSTRUCTION DESIGN, DRAWINGS, DOCUMENTS INCLUDING THE INSTALLATION AND BRACING OF TRUSSES MANUFACTURED BY THIS COMPANY.



**TYPICAL TRUSS END**

**WARNING**

CONVENTIONAL FRAMING, ERECTION AND/OR PERMANENT BRACING IS NOT THE RESPONSIBILITY OF THE TRUSS DESIGNER, PLATE MANUFACTURER, OR TRUSS MANUFACTURER. PERSONS ERECTING TRUSSES ARE CAUTIONED TO SEEK PROFESSIONAL ADVICE REGARDING ERECTION BRACING INCLUDING ERECTION TO PERMANENT BRACING WHICH MAY BE REQUIRED IN SPECIFIC APPLICATIONS. SEE "BRACING WOOD TRUSSES COMMENTARY AND RECOMMENDATIONS" (HBR91) FOR FURTHER INFORMATION.  
 TRUSSES SHALL BE INSTALLED IN A STRAIGHT AND PLUMB POSITION WHERE NO SPEAKINGS IS APPLIED DIRECTLY TO THE TOP AND BOTTOM CHORDS. TRUSSES SHALL BE HANDLED WITH REASONABLE CARE DURING ERECTION TO PREVENT DAMAGE OR PERSONAL INJURY.

**ATTENTION**

\*APPROVAL OF THIS TRUSS LAYOUT IS NECESSARY BEFORE FABRICATION CAN BEGIN. VERIFY ALL SPANS, PITCHES, OVERHANGS, ELEVATIONS, & BEARING CONDITIONS. ACCEPTANCE OF THIS LAYOUT ASSUMES TOTAL RESPONSIBILITY. THE TRUSSES WILL BE BUILT IN ACCORDANCE WITH THIS LAYOUT\*

APPROVED BY: \_\_\_\_\_  
 DATE: \_\_\_\_\_

**HITEK TRUSS**  
 6179 Nature Coast Blvd.  
 Brooksville, FL 34602  
 352-797-0877  
 Fax 352-797-0277  
 hitektruss@gmail.com



**Starr Quality Construction**  
 JOB NAME: 633 SW 13th St  
 LOT/BULK/SUBDIV: 633 SW 13th St Cape Coral, FL 33991

SCALE: 3/16" = 1'  
 DATE: 8/17/2021  
 DRAWN BY: WE  
 JOB NUMBER: Q5145

**NOTICE:**

APPROVAL OF THIS TRUSS LAYOUT IS NECESSARY BEFORE FABRICATION CAN BEGIN. VERIFY ALL SPANS, PITCHES, OVERHANGS, ELEVATIONS, DETAILS AND BEARING CONDITIONS. THESE ARE IMPORTANT AS THE TRUSSES WILL BE BUILT IN ACCORDANCE WITH THE INFORMATION SHOWN.

APPROVED BY: \_\_\_\_\_

DATE: \_\_\_\_\_